



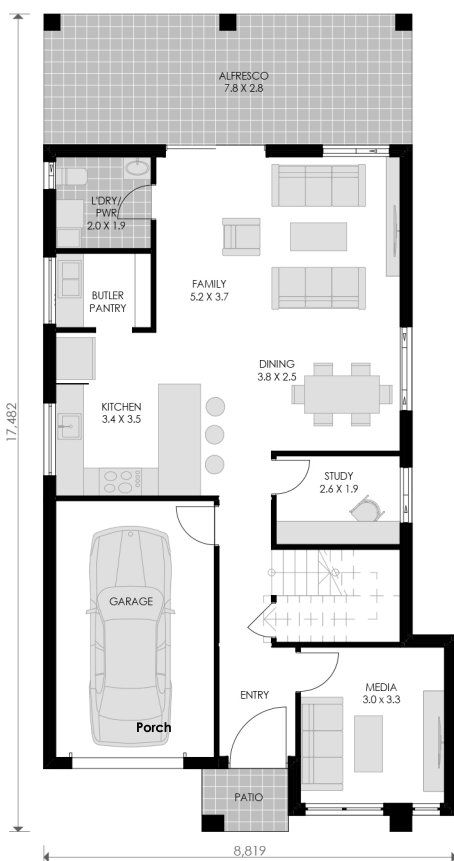
DOUBLE STOREY STANDARD DESIGN

LUXURY | AFFORDABLE | CUSTOMISED

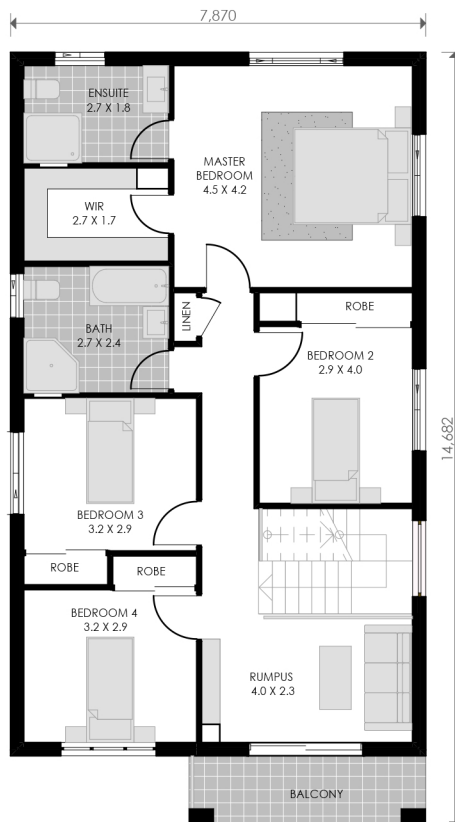
PROJECT DETAILS

This home design is certain to cater all the family needs by careful spatial arrangement on both the floors. It is ideal for a modern family and perfectly accommodates private and common areas.

The lower floor having a study area, home theatre, family and dining spaces along with kitchen. There is an alfresco. The upper floor is accopained by a rumpus open to balcony, a master bedroom with an ensuite and walk in-robe. Also consists all other bedrooms.



GROUND FLOOR PLAN



FIRST FLOOR PLAN

SPECIFICATIONS

Floor Areas (m2)

Ground Floor	89.45
First Floor	110.98
Garage	21.77
Porch	2.50
Alfresco	22.04
Total	246.74