



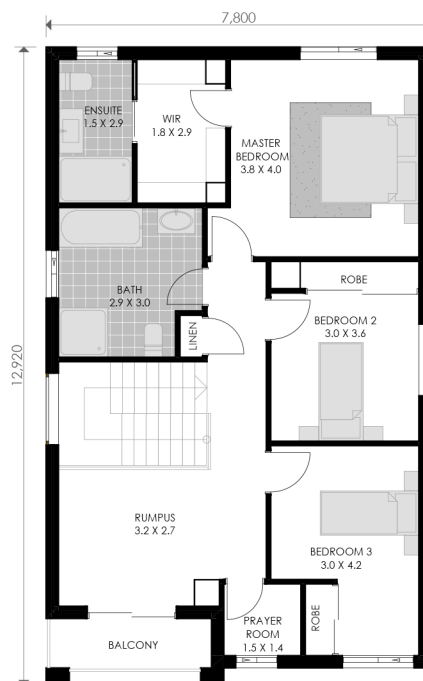
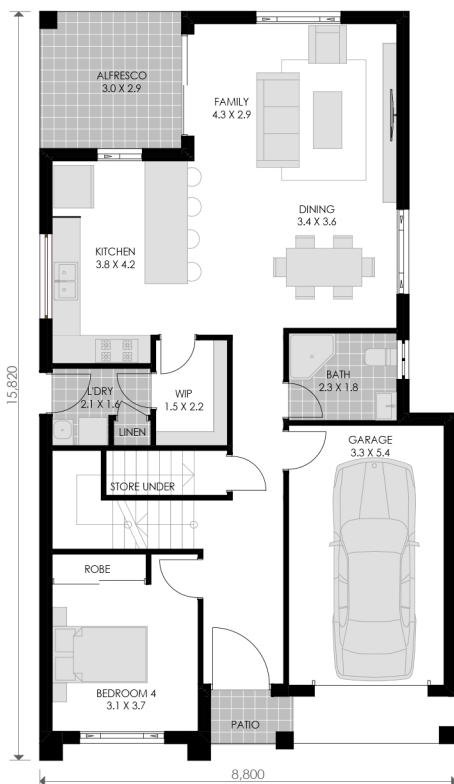
DOUBLE STOREY STANDARD DESIGN

LUXURY | AFFORDABLE | CUSTOMISED

PROJECT DETAILS

This home design is certain to cater all the family needs by careful spatial arrangement on both the floors. It is ideal for a modern family and perfectly accommodates private and common areas.

The lower floor having a study area, home theatre, family and dining spaces along with kitchen. There is an alfresco. The upper floor is accpanied by a rumpus open to balcony, a master bedroom with an ensuite and walk in-robe. Also consists all other bedrooms.



SPECIFICATIONS

Floor Areas (m2)

Ground Floor	97.07
First Floor	120.42
Garage	30.43
Patio	6.90
Alfresco	9.70
Total	264.45

GROUND FLOOR PLAN

FIRST FLOOR PLAN